



Northumberland
County Council

Tynedale Local Area Council.
15th January 2019
Haydon Bridge Schools update

Purpose is to update Members on:

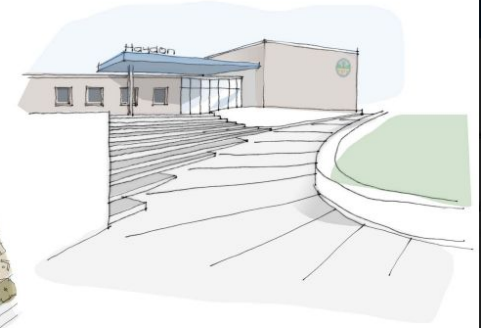
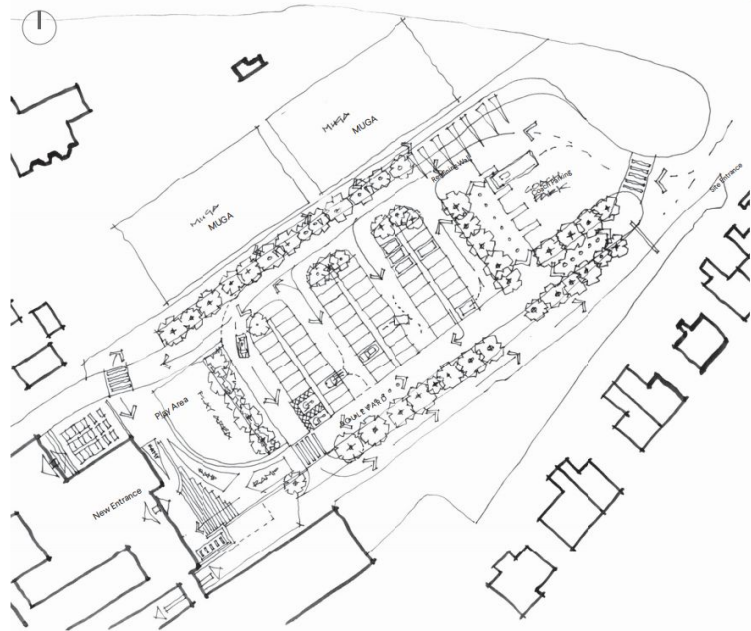
- The progress made with regard to the reorganisation of the school system in the Haydon Bridge Partnership.
- The appeal to the Schools Adjudicator and his decision.
- Wise Academies Consultation.
- West Woodburn First School.
- School Transport
- Haydon Bridge High School.

Building Projects

- Cabinet approved £5.1m investment in the schools estate to support the reorganisation.
- £4.5m will be invested in Haydon Bridge High School.
- £360k will be invested in a classroom extension at Otterburn Primary School.
- £366k will be invested in a classroom extension at Greenhaugh Primary School.
- Not all the works planned as part of the £1.3m at Bellingham Primary school will be possible due to the continuation of the middle school, but plans to incorporate early years provision provided by North Tynies will continue.

Building works update

Haydon Bridge, project start date 29 April 2019



CSK 02
Entrance Approach
Scale: 1:100 @A3
Project No: GRA 591
Haydon Bridge High School
Northumberland
County Council
Drawn By: CA
Checked By: CA
Date: 09 December 2018



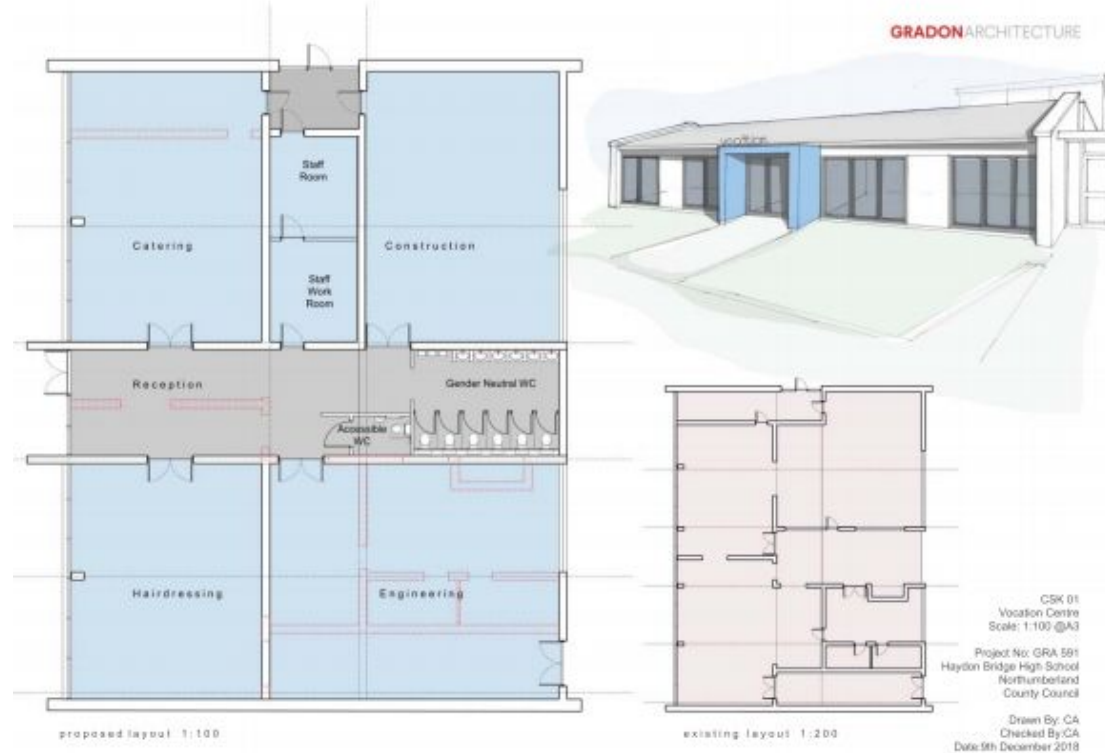
External Seating Space



Proposed Colonnade Sketch

Building works update cont....

Vocational Centre

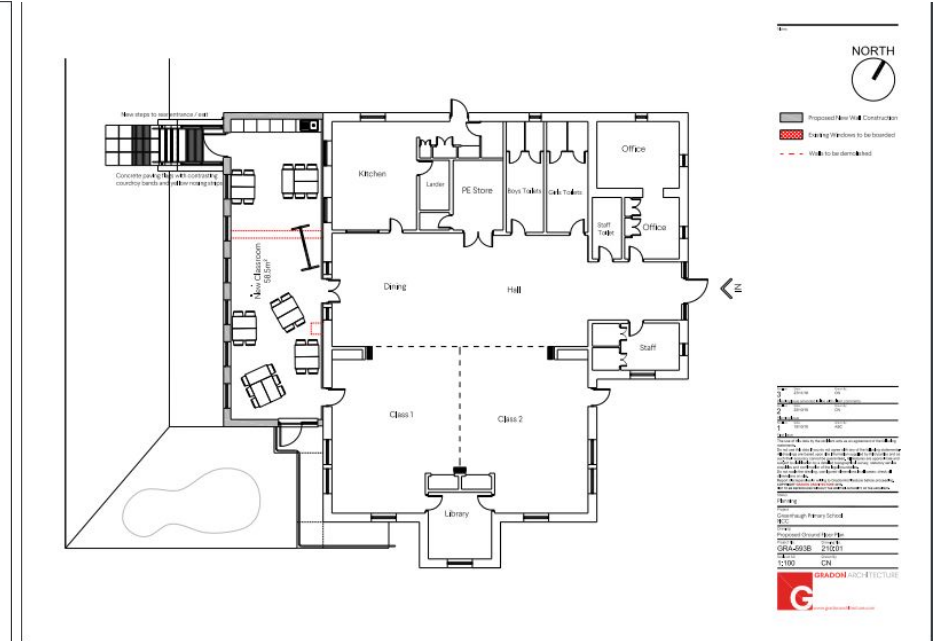


Identification Study - Areas

- 2.1 Main Entrance Car Park / Boulevard / MUGA / Hard Play Area
- 2.2 Main Entrance Facade
- 2.3 Main Entrance Arrangement
- 2.4 Ground Floor Colonnade / Staff Room / Canopy and External Hard Play Area
- 2.5 Vocational Centre
- 2.6 Main Hall and Adjacent Corridor
- 2.7 Main Hall Interfaces / Social Space
- 2.8 Window Replacement
- 2.9 'Horseshoe' Re-roofing
- 2.10 DDA Audit and Adaptations
- 2.11 6th Form Relocation
- 2.12 Performing Arts and Learning Hub
- 2.13 Library
- 2.14 Sports Hall Changing Areas
- 2.15 General Painting & Decorating

Building works update cont....

Greenhaugh planning decision due on 23 January



Appeal to the Schools Adjudicator.

- Bellingham Middle as a foundation school lodged an appeal against the closure of Bellingham Middle School, with the schools adjudicator.
- In formulating his decision, the Schools Adjudicator reviewed all documentation and also met with the Governing Body, Council Officers and the regional schools commissioner. He also held a public meeting at Bellingham Middle Schools.
- In October the Schools Adjudicator informed the council of his decision to reject the council's proposal to close the middle school.
- The Adjudicator published his full reasons for the decision in November.
- The outcome of the decision will result in the continuation of a mixed system of secondary provision in the partnership and an increase in the already surplus places in the partnership.
- The council decision to reorganise Wark CE, Kielder, Otterburn, Greenhaugh and Bellingham First Schools will continue to be implemented in September 2019 as approved.
- The Council has written to the office of the Schools Adjudicator to seek clarification on a number points that are unclear in the written reasons for the decision.

Wise Academies Consultation.

- The Wise Academies Trust became the sponsor of the middle and first academies in Haltwhistle in September 2018.
- In the light of the Council's decision in July to implement one primary/secondary pathway for education within the Haydon Bridge Partnership, Wise Academies Trust subsequently launched a consultation in Autumn 2018 on a proposal to close Haltwhistle Middle Academy in August 2019 and extend the age range of Haltwhistle First Academy to become a primary school from September 2019.
- Although the consultation closed on 3 December, the outcome is not yet known; however the council is supportive of the proposal.

West Woodburn First School.

- The Council decided in July 2018 that it would not be in the best educational interests of the children on roll at West Woodburn First School to approve the extension of the age range of the school due to its issues with finance, leadership, staffing and governance.
- Since that time, the headteacher of Otterburn First School has been overseeing the school and the Governing Bodies of both schools have been in discussions with regard to federating and will begin consultation on this proposal with parents and interested parties early this year.

Admissions & Transport

- Following the decision of the schools adjudicator, this now means that parents of children in the current Year 4 at first school have the choice of either keeping their children in their current first school or applying for a place at Bellingham Middle School.
- The Council has agreed a one-off exception to the Home to School Transport Policy and will provide transport to Bellingham Middle School for those parents who applied for a place by the 16th November 2018 deadline.
- School Transport Officers are working with transport providers to reduce journey times to Haydon Bridge High School from the North Pennine and Redesdale areas.

Haydon Bridge High School

Educational Outcomes/Ofsted update:

The Council's cabinet agreed to allocate a further £1.54m to support HBHS with the development of a new curriculum, leadership and management support, and a training and development programme for staff. Furthermore:

- Additional support has been provided for pastoral, maths and a leadership consultant;
- Additional support provided from the local authority for school improvement;
- Andy Johnson now chairs the IEB to provide additional leadership capacity
- The school leadership team has been restructured and the school has successfully appointed a new Assistant Headteacher;
- Ongoing professional development and leadership training programmes are being provided for staff.

Educational Outcomes:- Haydon Bridge

Early Year and Foundation Stage

- The percentage of pupils achieving a good level of Development is 77.3% continues to be above the national average.

Key Stage 1

- Improvement on 3 of the 4 performance measures
 - Reading by 1.4%
 - Writing slight improvement from 72.9% to 73.2%
 - Reading writing and Maths combined improved by 1%

Educational Outcomes:- Haydon Bridge

Key Stage 2

- Improvement on all 4 performance measures
 - Reading Improved by 9.6%
 - Writing improved by 7.6%
 - Maths improved by 2.9%
 - Combined improved by 5.8%

Key Stage 4

- There were improvements across 3 headline performance measures at Haydon Bridge High School.
 - Attainment 8 improved by 0.3 points
 - Progress 8 improved from -0.21 to -0.9
 - EBacc entry rose to 11.5% from 10.8%
- However there was a slight drop of 1.1% in the percentage of pupils who achieved Level 5+ in English and Maths



Northumberland
County Council

www.northumberland.gov.uk